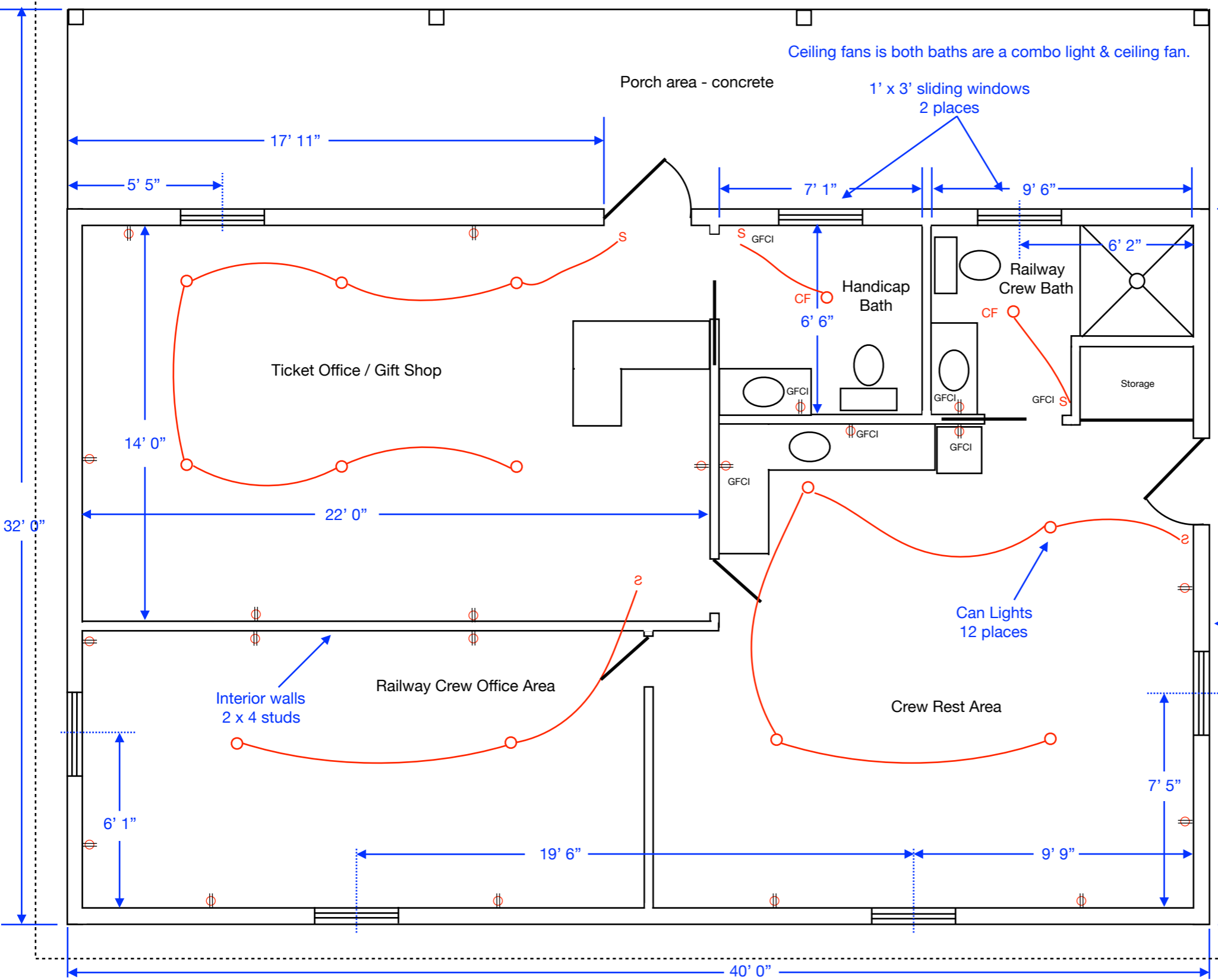


FLOOR PLAN

REVISION HISTORY	
1 - 1/29/2021	Draft Release for Review
1 - 2/12/2021	Decreased crew bath by 2', added door from gift shop to crew rest area, added door & wall between office & rest area, added 72 soft to gift shop area.



Roof overhang 1' 0"

Electrical panel location
200 amp service.
Main panel for entire
rail heritage park.

Exterior walls
2 x 6 studs

3' x 4' Double Pane
Double hung window
7 places



Ticket Office & Gift Shop - Sheet 1

Scale - 1' = 0"



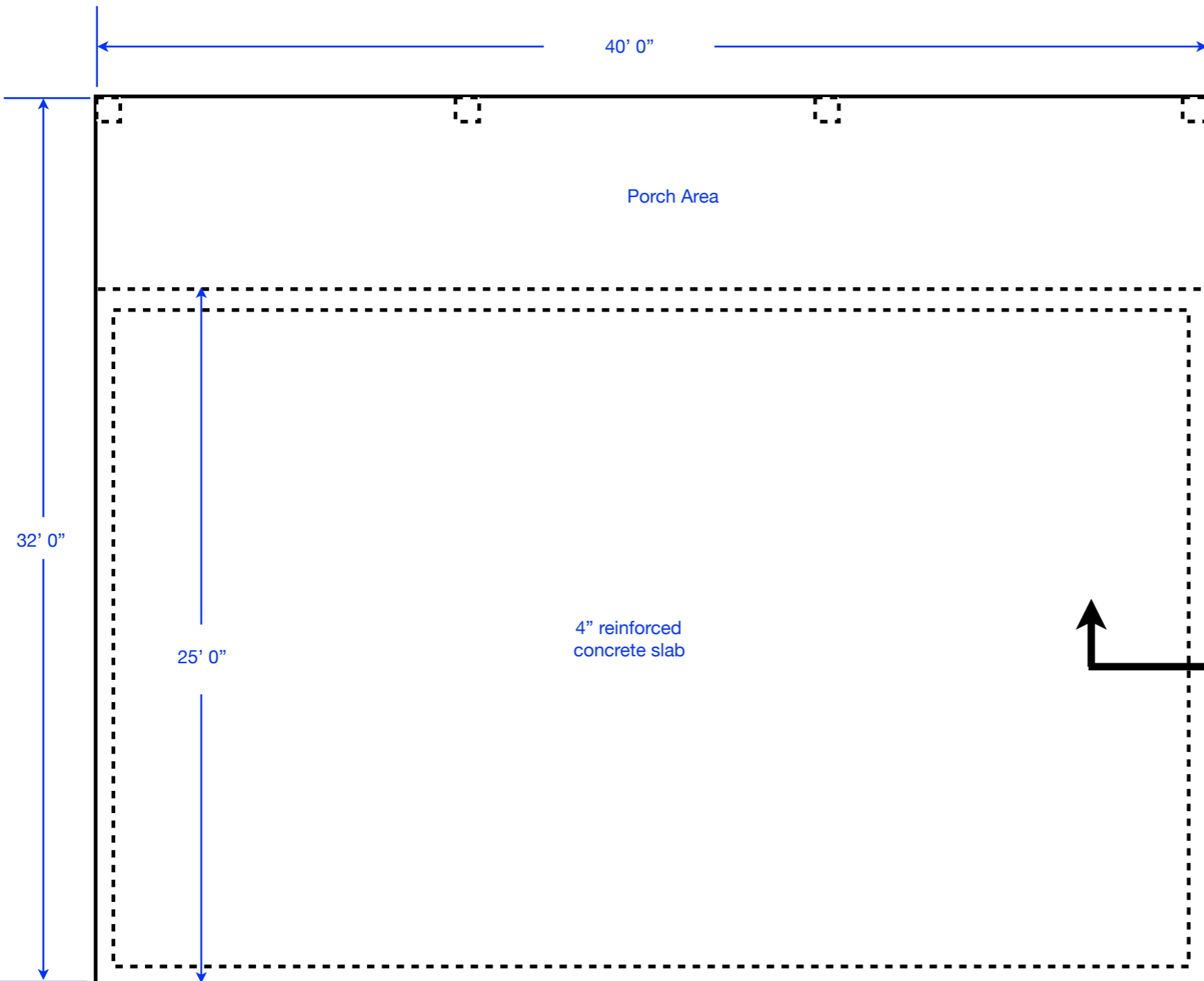
Drawn by:
Allen Dobney

FOUNDATION PLAN

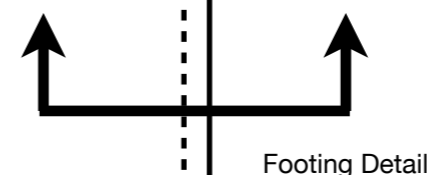
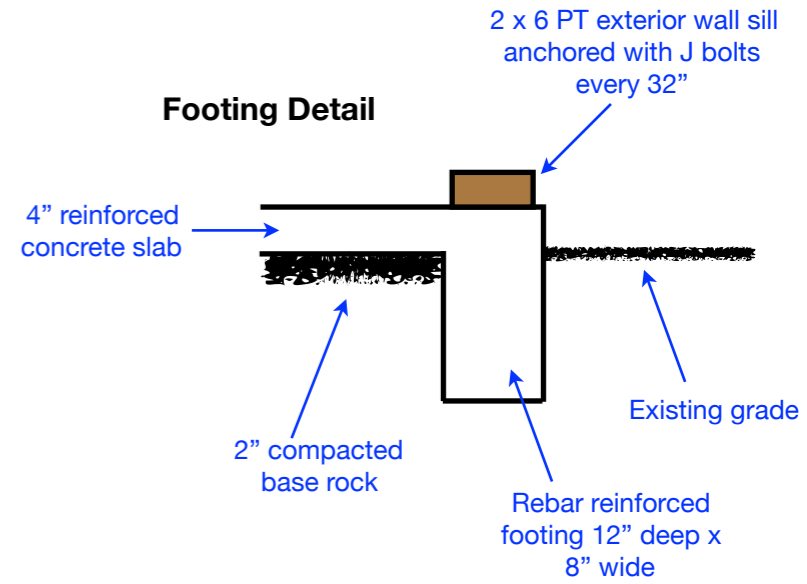
North



REVISION HISTORY	
1 - 1/29/2021	Draft Release for Review



Footing Detail



Ticket Office & Gift Shop - Sheet 2

Scale - 1' - 0" (15 points)

Drawn by: Allen Dobney

REVISION HISTORY

1 - 1/29/2021	Draft Release for Review

REAR ELEVATION



← Standing seam metal roof
Pitch: 2' run 1' rise

← Concrete lap siding 8" reveal

North



FRONT ELEVATION



← Standing seam metal roof

← Concrete lap siding 8" reveal

North



Ticket Office & Gift Shop - Sheet 3

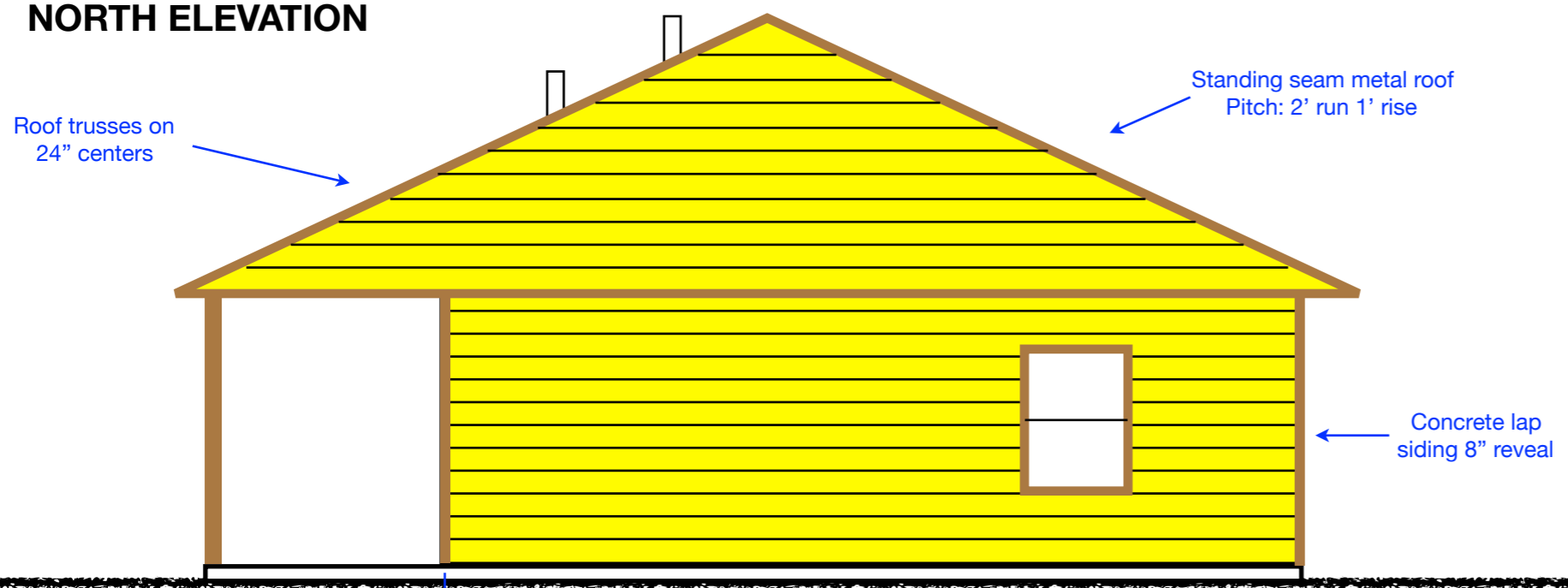
Scale - 1' - 0" (15 points)

Drawn by: Allen Dobney

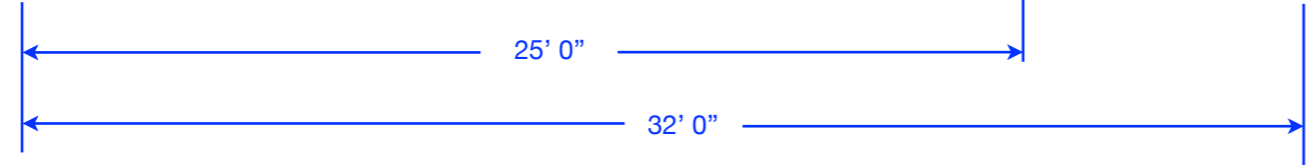
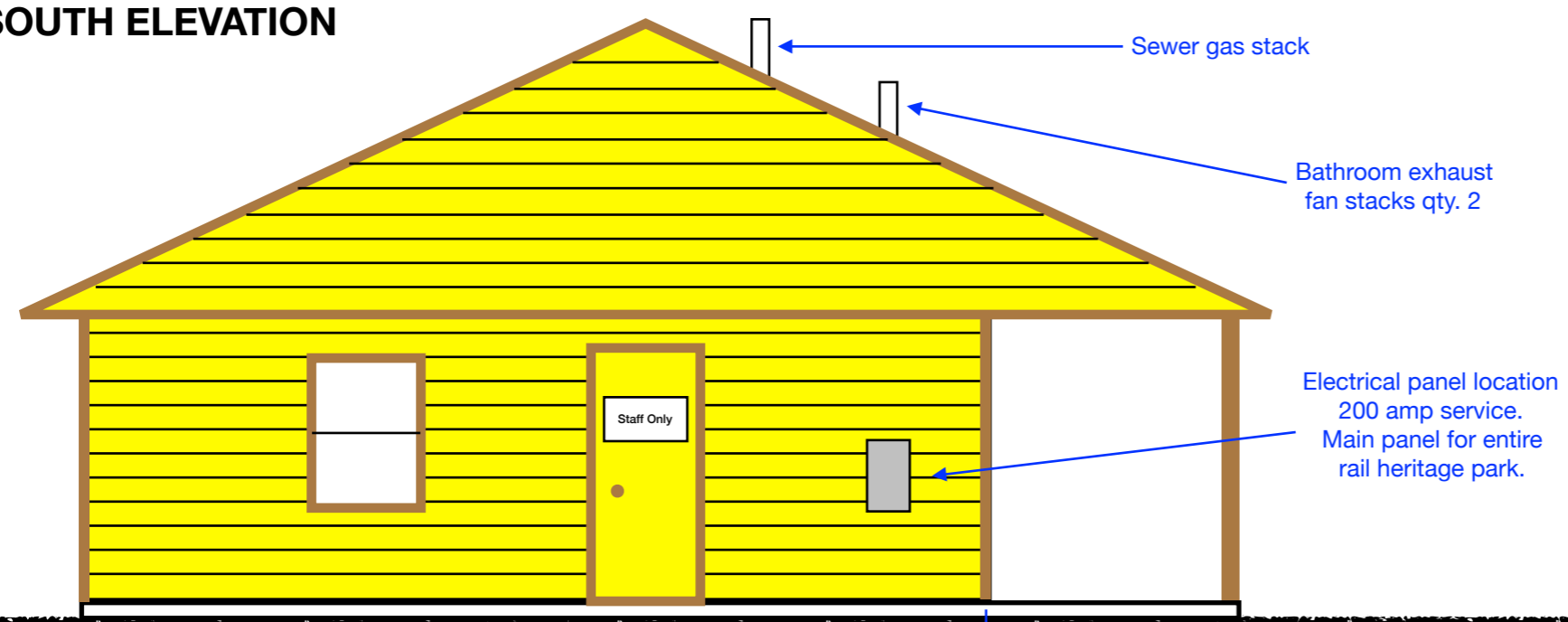
REVISION HISTORY

1 - 1/29/2021	Draft Release for Review

NORTH ELEVATION



SOUTH ELEVATION



Ticket Office & Gift Shop - Sheet 4

Scale - 1' - 0" (15 points)

Drawn by:
Allen Dobney